



US Breaker's UL489 250 - 400A 3P Powerpact LGL & Compact NS Replacements

Merlin Gerin Compact NS (NS400 N, NSJ400 N) & Square D Powerpact (LGL)
Direct Replacement Cross Reference

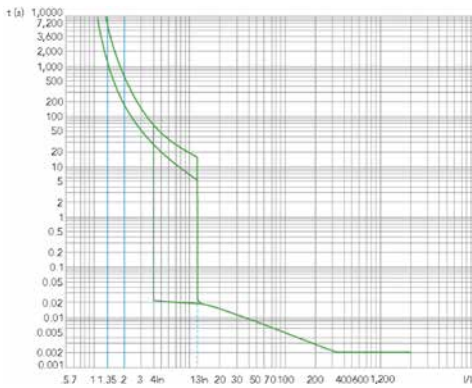


US Breaker DG

DG Standard AIC (65KA@240V, 35KA@480V)							
Amps	Part #	Thermal	Magnetic	Price	Square D Cross Ref	Merlin Gerin Cross Ref (Frame+Trip)	Merlin Gerin Cross Ref (Frame+Trip)
250	DJ3C250L	(200 - 250)	(1250 - 2500)	\$549.56	LGL36250U31X	NS400N + STR23E 250A	NSJ400N + STR23SP 250A
400	DG3C400L	(320 - 400)	(2000 - 4000)	\$449.16	LGL36400U31X	NS400N + STR23E 400A	NSJ400N + STR23SP 400A

* US Breakers's DG Breaker Includes 6 wire lugs for 3/0 - 500 kcmil..
* US Breaker's frames have electromechanical trip units (vs electronic) by Square D and Merlin Gerin
* US Breaker makes no claims of ownership for copyrights or trademarks used for cross reference of part #'s.

Time Current Curve



D Frame 250 - 400 Amp



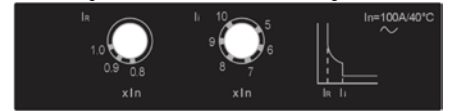
15 - 600A Frames



Trip Unit Adjustability

Circuit Breaker Frame	JD	JG	DG	DJ
Rated Current In	175 - 250		250 - 400	
Thermal Adj.	Adjustable = (0.8, 0.9 or 1.0) x In			
Magnetic Adj.	Adjustable = (5-10) x In			

Example: JD3C200L In = 200 Amps



Ir Thermal Setting	Ii Magnetic Setting
.8 (x In) => 160 Amp	5 (x In) => 1000A 8 (x In) => 1600A
.9 (x In) => 180 Amp	6 (x In) => 1200A 9 (x In) => 1800A
1 (x In) => 200 Amp	7 (x In) => 1400A 10 (x In) => 2000A

US Breaker's DG Accessories

Signaling

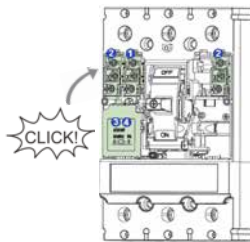
Type	Switch Part#	Contacts	
		NO	NC
Aux Switch	XAU1EL	1	1
Bell Alarm	XAL1EL	1	1

Under Voltage Trip

110 - 127Vac	220 - 240Vac	24 - 30Vdc
XUVAHD120	XUVAHD240	XUVDHD024

Shunt Trip

100 - 130Vac	220 - 240Vac	480 - 500Vac	Price	24Vdc
XSTAHD120	XSTAHD240	XSTAHD480	\$43.68	XSTDHD024



Through the Door Operator (Nema 4/4X, IP55)

Through the Door - 6 inch	XVDGDD06
Through the Door - 12 inch	XVDGDD12



Handle Operator



Interlock



Lock Off

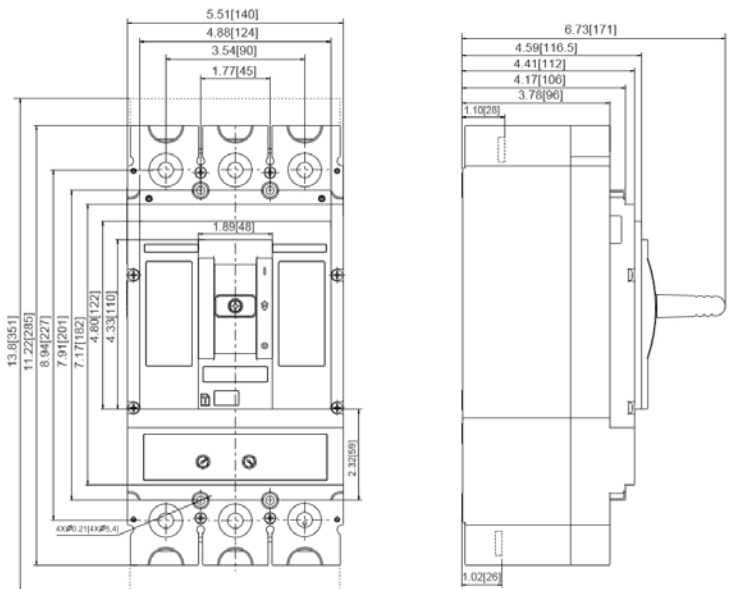


Rear Connectors



Plug in Base

US Breaker's DG/DJ 3P Dimensions



* US Breaker accessories are for use in & UL listed for use in US Breaker frames only.