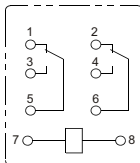
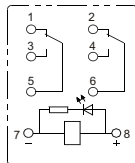


JQX-13F Miniature high-power electromagnetic relay



Conventional type



Indicator light with status indication

Contact forms	2Z: 2 change over
Insulation resistance	100M Ω (500V DC)
Maximum operation voltage of contact	AC: 250V DC: 125V
Maximum operation current of contact	10A
Maximum switching power	2200VA 280W
Rated voltage of coil (Ue)	AC: 6~380V DC: 5~220V
Rated power consumption of coil	0.9W 1.2VA
Attract voltage of coil	AC: $\leq 80\%U_e$ DC: $\leq 75\%U_e$
Release voltage of coil	AC: $\geq 30\%U_e$ DC: $\geq 10\%U_e$
Maximum voltage of coil	110%Ue
Electrical life	1×10^5 times
Mechanical life	1×10^7 times